

Jotform

Enterprise Data Collection Platform (Online Forms)

What is Jotform?

Jotform is an Enterprise Data Collection Platform that allows agencies to create their own low-to-medium complexity online forms. This self-service tool can be used to replace fillable PDFs, create surveys, and so much more.

Benefits of using Jotform:

- Greatly expands data integrity related to data collection via forms
- Improves data quality and accessibility for agencies
- Provides a better data collection experience for citizens
- Works on multiple browsers and on mobile devices
- Reduces paper by using an electronic only delivery method for Electronic Data Collection - no paper received

Using Jotform provides a great opportunity to replace or supplement other tools or processes for forms and surveys. Jotform goes beyond Microsoft Forms and is not as complex as a web application or Dynamics application.

Opportunity to replace or supplement:

- Fillable PDF
- Survey Monkey
- Microsoft Forms
- Word/Excel
- ILINX e-forms
- Formstack

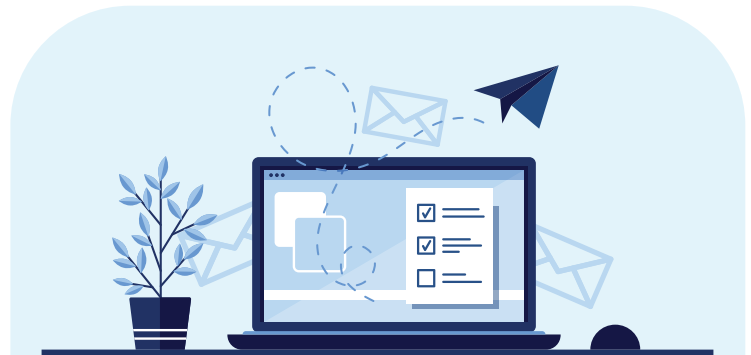
Data:

Jotform is a Software as a Service (SaaS) Offering – The software is hosted off-site. When the data is submitted by the constituent, it resides in a table on the Jotform site.

- Data is encrypted while on Jotform platform
- can be sent to an Inbox, one submission at a time
- can be downloaded as a .csv file with a Jotform license

Automation:

- Jotforms provides opportunities for automation for downloading data and pdf copies.
- If the form is developed by NDI Records, the development for this is non-billable.
- A single Data-Only license will be needed for each agency to get the data and pdfs moved via the automated service.
- For more information on the automation process, please visit our webpage or email itedcp@nd.gov



What do you get with the service?

- Self-service supported development
- NDI Forms development
 - NDI creates the form for your agency.
- The Data Science & Analytics group can create surveys for you using Jotform
- ND State Website Platform integration support
 - NDI creates the form for your agency.
 - Agencies will be sent the submitted information, or
 - Can hold a Jotform license and log-in to download the data. This license would also allow one individual to create and maintain Jotform forms.

How to request services

NDI's Self Service Portal may be used to submit a "State Forms" service request to design a Jotform or request a Jotform license.

Licensing:

Who needs a license?

- **Forms developer** – form developer and/or person downloading the data.
- **Data-only** – direct access to the data on Jotform.

Cost:

Each user is required to have a license- each licensed user has access to the Jotform enterprise support.

- **Jotform named user** – Create, share, and manage forms
 - Our rate is \$86 per month per license.
- **Data named user** – Download data and pdf copy of submission
 - The estimated rate would be \$36 per month per license.
- **HIPAA Server** – Jotform offers a HIPAA compliant server option that will be included with the service.
 - Business Associate Agreements (BAAs) will be provided.