

 **MOTOROLA SOLUTIONS**

State of North Dakota

SIRN 2020 Status Update

March 2024



SIRN 2020 Overall Status Update



1928
2018
YEARS

VPN Core setup / Configurations / Testing

- ND and MSI Overall Architecture -
 - Overall Network drawings have been updated with possible future options added
 - Additional meeting have been held to enable the teams to schedule Bismarck and Fargo CEN testing (Date = TBD)
 - Radio Management (RM)- ATP complete
 - Teams to start working on retouch schedule while the State AG is reviewing RM access needs
 - Encryption will be added / Updated during Re-touch
 - ATP acceptance of NICE logging- Complete
 - State is reviewing how this will be used with AG
 - Teams working on expansion options
 - Smart Connect- ATP has been completed
 - Need to determine how this will be used

Core Additions- (Change Order will be provided to State Once verifications are completed)

- DHHS to add Network Equipment an Console
 - Design Verification Planned for 3/26/25
 - The goal is to define the responsibilities of the task required to integrate the equipment (MSI, DHHS and NDIT)
- National Guard – SIRN Console Addition (Connect to State Radio)

SIRN 2020 RF Site Build Status



1928
2018 YEARS

- Overall Site Build Status for Locations in which an NTP Has Been Received (126 Contract Locations + One Change Order)
 - 15 locations are ready for 2024 build season
 - Open- Sites requiring lease OR MOU / State Decisions needed / Alternate Locations needed= 31 (18 Planned by End of Year)
- Overall Site Build Status

Current 2024 Site Construction

| | Q1 | Q2 | Q3 | Q4 | Total |
|--------------------|----|----|---------------|----|-----------|
| Planned Civil Work | 1 | 11 | 3 | | 15 |
| Need A&E complete | | | 7 | 11 | 18 |
| | | | Total= | | 33 |

Overall Coverage / Sites Targeted for Completion

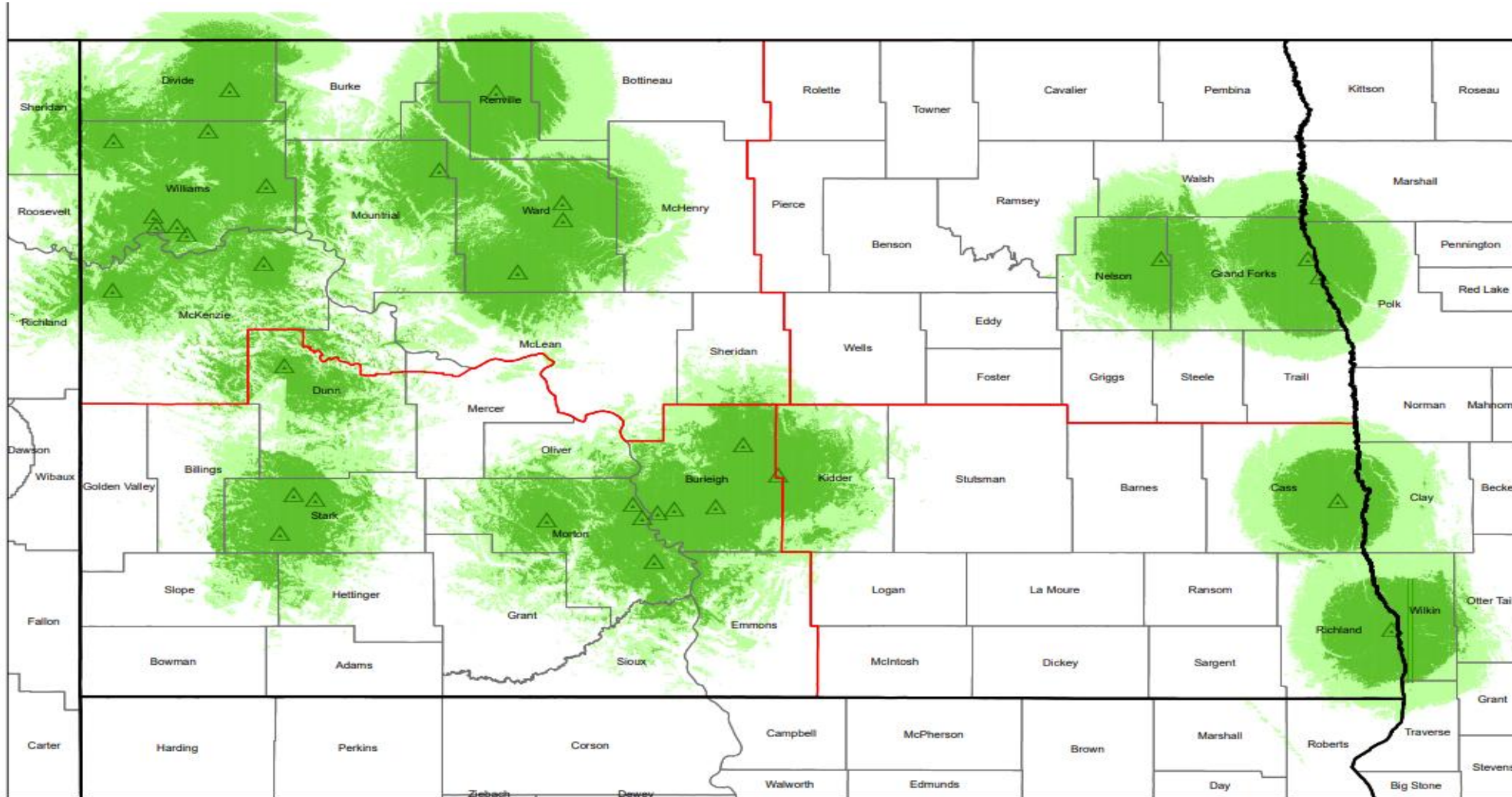
| | QTY | |
|----------------------------------|------------|-------------------------|
| Sites with Active User | 33 | |
| Available Sites (ATP complete) | 39 | |
| Sites targeted for 1st Half 2024 | 23 | (9 Sites Need Opto/ATP) |
| Sites Targeted by EOY 2024 | 18 | |
| | GT= | 113 |

SIRN Build Out : Sites with Active Users

Qty=33 (Map 1)



1928
2018
YEARS



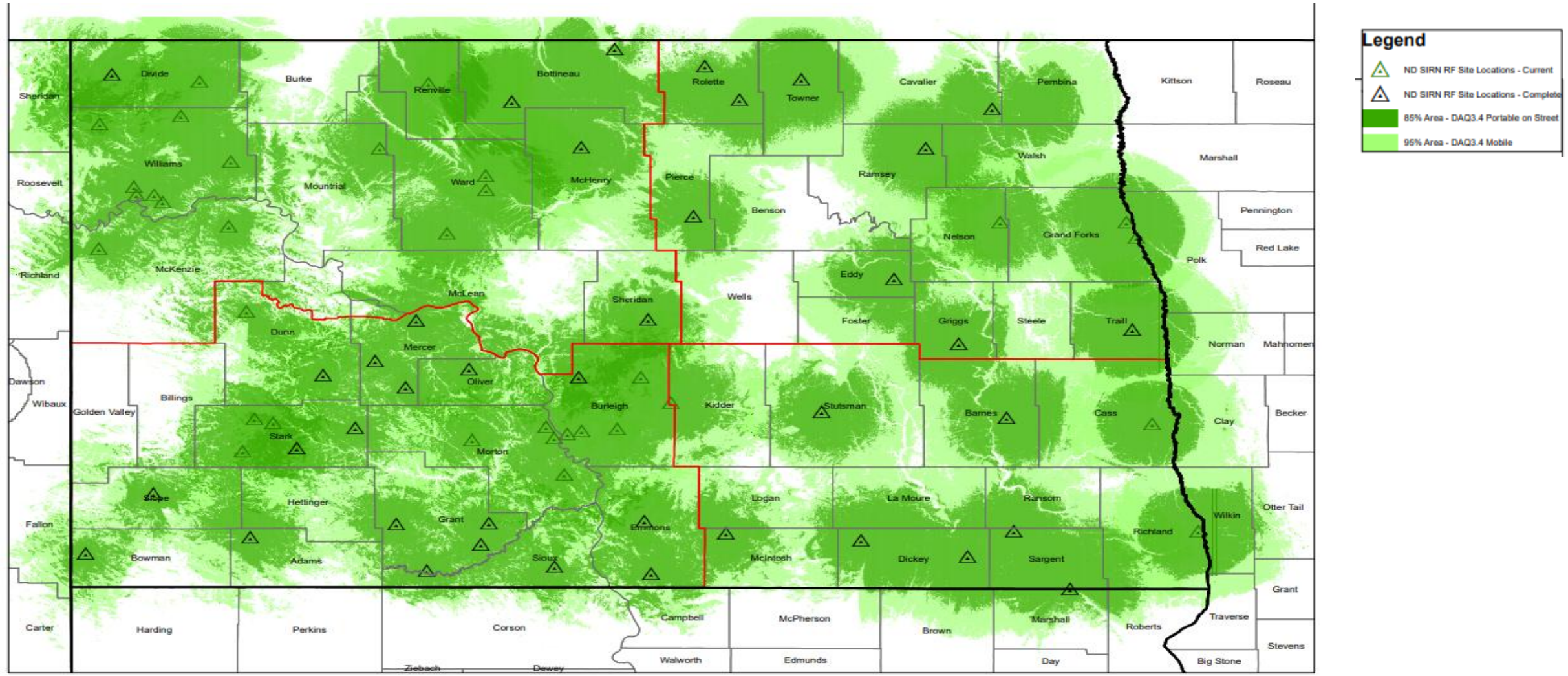
Legend

- ND SIRN RF Site Locations - Current
- 85% Area - DAQ3.4 Portable on Street
- 95% Area - DAQ3.4 Mobile

SIRN Build Out : Overall RF Site Coverage- Completed Sites (Available for use- Map 2) GT=72



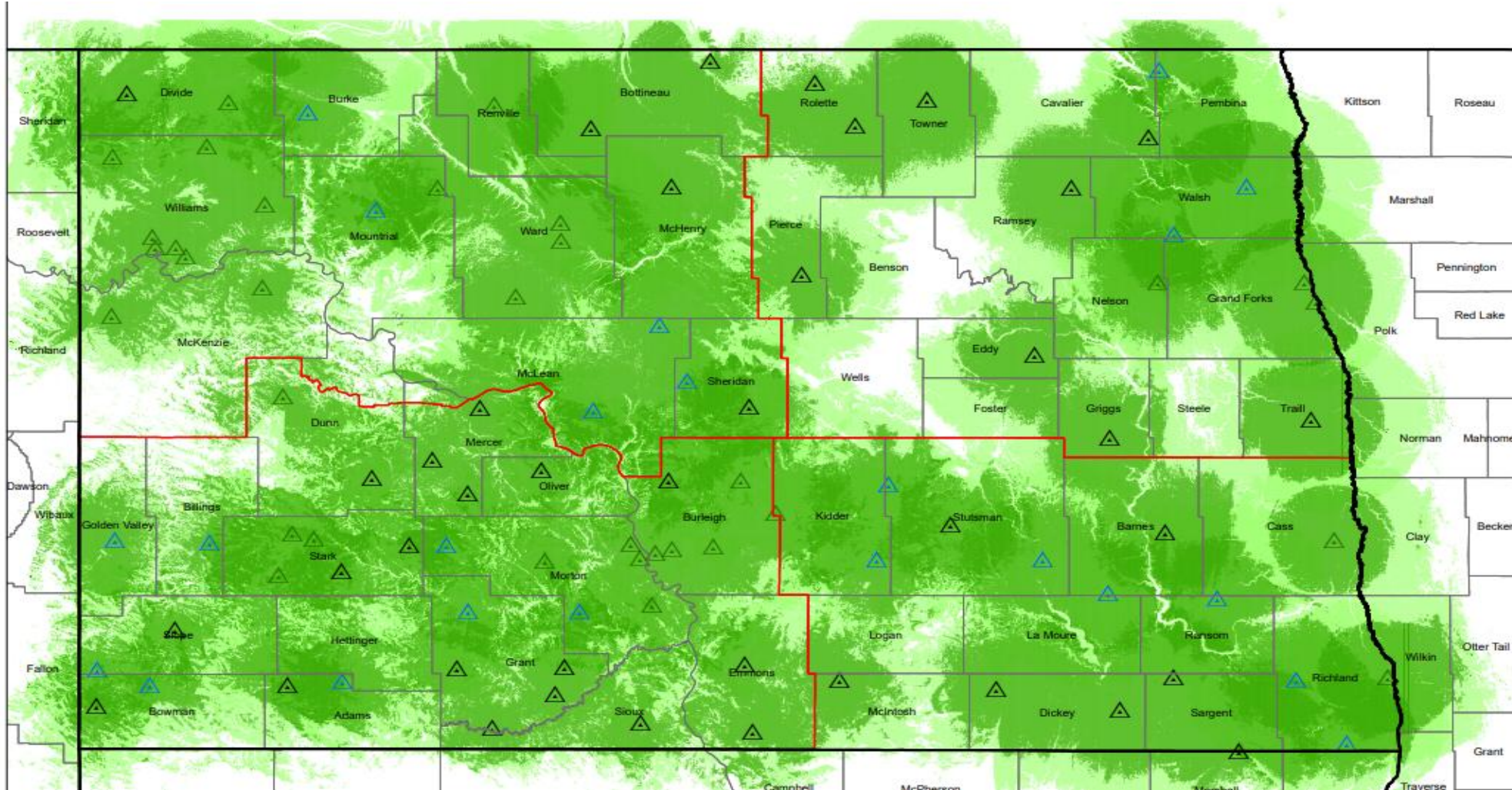
1928
2018
YEARS



SIRN Build Out : Sites Targeted 1st Half of 2024 (Map-3, GT=95)



1928
2018
YEARS



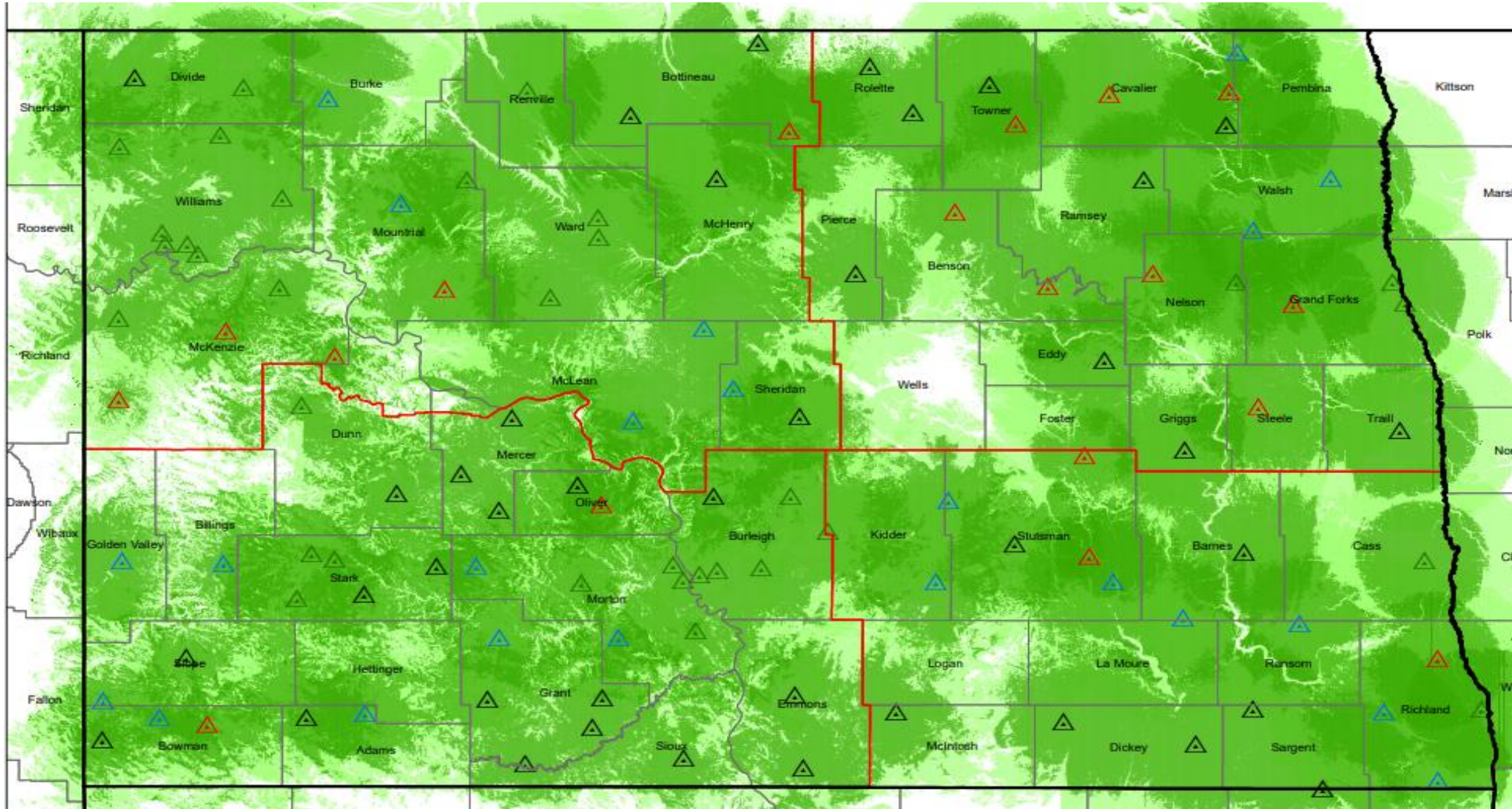
Legend

- ND SIRN RF Site Locations - Current
- ND SIRN RF Site Locations - Complete
- ND SIRN RF Site Locations - 1H Targets
- 85% Area - DAQ3.4 Portable on Street
- 95% Area - DAQ3.4 Mobile

SIRN Build Out : Sites Targeted End Of Year-2024 (Map- 4, GT=113)



1928
2018
YEARS



Legend

- △ ND SIRN RF Site Locations - Current
- △ ND SIRN RF Site Locations - Complete
- △ ND SIRN RF Site Locations - 1H Targets
- △ ND SIRN RF Site Locations - Lease Targets
- 85% Area - DAQ3.4 Portable on Street
- 95% Area - DAQ3.4 Mobile

SIRN 2020 Sub Re-Touch Info / Qty's

DRAFT Schedule



1928
2018
YEARS

Mid-States Radio Breakdown

| Agency | Qty |
|-----------------|------------|
| Kenmare PD | 4 |
| Burlington PD | 6 |
| Williston BCI | 19 |
| UMRRC | 28 |
| Tioga PD | 18 |
| Williams EM | 32 |
| WFD | 4 |
| Williams SO | 94 |
| Ward SO | 83 |
| Williston PD | 148 |
| Minot PD | 167 |
| Ward BCI | 9 |
| Total LE | 612 |

| Agency | Qty |
|----------------|-----|
| Other FD / EMS | 560 |

MS Extended Total= 1172

Approx Re-Rtouch Duration= ~ 2.5 Months

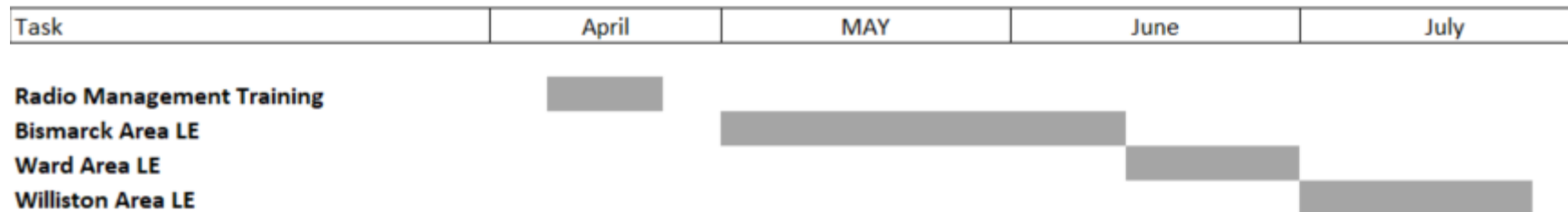
ECI Radio Breakdown

| Agency | Qty |
|-----------------|------------|
| Bismarck PD | 288 |
| Mandan PD | 72 |
| Burliegh SO | 126 |
| Lincoln PD | 14 |
| Total LE | 500 |

| Agency | Qty |
|-------------------------|------------|
| Bismarck City FD | 128 |
| Bismarck Airport | 15 |
| Metro Ambulance | 75 |
| Mandan City FD | 40 |
| Wilton Amb | 6 |
| Total FD / Other | 264 |

ECI Extended Total= 764
(~400 Radios Loaded into RM)

Approx Re-Rtouch Duration= ~ 1.5 Months



SIRN Build Out : NEXT STEPS



1928
2018
YEARS

Overall Phase Two Schedule(2024 Civil Work)

- Sites requiring A&E work to be completed (Pending final leasing, MOU, TERO / Permitting)
 - Q1-(7), Q2-(8), Q3-(2) and Q4-(1)
 - Work with State team to help obtain additional site locations / leasing to keep the civil construction teams active for the full build season.
 - Working with State to received Shelter NTP's (qty-10) for the sites targeted for the 2024 Build season
- Awaiting State NTP (Group 6=13) to start this group.

System Training

- MSI Training team in process of creating a custom 2 week Training course
 - Week of 5/13 MSI will have trainers in market

Network Design

- Radio Mangement / Radio Re-Touch schedule will be provided once complete
 - Radio Encription to be rolled into the re-touch plan and LE Radios will be a priority